



ICI Society - ParcelMap BC and Beyond  
Vancouver GIS User Group  
January 9, 2019





# ICI Society - Update

*ICI Society - Intro*

*Self-serve options*

*Customize ParcelMap BC - GeoShare Packages*

*ParcelMap BC Uptake*

*Adoption Working Group*

*360 Labs*

*Adoption stories*

*Address BC*

*Joint Infrastructure*



# ICI Society - Intro



INTEGRATED  
CADASTRAL  
INFORMATION  
SOCIETY



ICI SOCIETY



MEMBERS



COMMUNICATIONS



PARCELMAP BC



SERVICES



*Building collaborative networks to facilitate innovative, location-based solutions that support the economic, social, and environmental well-being of British Columbians.*



## Current Associate Members

[Agriculture & Agri-Food Canada](#)

[BC OneCall](#)

[Caltech Surveys](#)

[Canadian Forest Products](#)

[Canadian Pacific Railway](#)

[Department of National Defence](#)

[Global Raymac Surveys Inc.](#)

[McElhanney Associates Land Surveying Ltd.](#)

[McElhanney Geomatics](#)

[Midwest Surveys Inc.](#)

[Port of Prince Rupert](#)

[Vancouver Fraser Port Authority](#)

[RCMP](#)

[South Coast British Columbia Transportation Authority \(Translink\)](#)

[Technical Safety BC](#)

[WSP Canada Inc.](#)

[Stikeman Elliott](#)

## Current Affiliate Members

[BC Electronic Library Network](#)

[Fire Chief's Association of BC](#)

[First Nations Technology Council](#)

[Government Finance Officers Association of BC \(GFOA\)](#)

[Local Government Management Association of BC \(LGMA\)](#)

## VAR Members

Value Added Reseller (VAR) memberships are no longer available. Existing VARs are:

[Landcor](#)

## Current Utility Members

[BC Hydro](#)

[City West Cable and Telephone Corp.](#)

[Enbridge Pipeline Inc.](#)

[Encana Services Company Ltd.](#)

[FortisBC Energy Inc.](#)

[Kinder Morgan Canada](#)

[Zayo Group Holdings, Inc.](#)

[Pacific Northern Gas](#)

[Shaw Communications Inc.](#)

[TELUS](#)



## Current First Nation Members

[ʔaq'am Community](#)

[Adams Lake Indian Band](#)

[Blueberry River First Nation](#)

[Carrier Sekani Tribal Council](#)

[Council of Haida Nation](#)

[Cowichan Tribes](#)

[Esk'etemc First Nation](#)

[Seabird Island Band](#)

[Gitq'a't First Nation](#)

[Gwa'sala-'Nakwaxda'xw Nations](#)

[High Bar First Nation](#)

[Hul'qumi'num Treaty Group](#)

[Huu ay aht First Nations](#)

[Katzie First Nation](#)

[Ka:'vu:'k't'h'/Che'k'tles7et'h' First Nations](#)

[Kitimaat Village Council](#)

[Klahoose First Nation](#)

[Kitselas First Nation](#)

[K'omoks First Nation](#)

[Kwikwetlem First Nation](#)

[Lake Cowichan First Nation](#)

[Lhtako Dene Nation](#)

[Lhoosk'uz Dené Nations](#)

[Lil'wat Nation](#)

[Little Shuswap Lake Indian Band](#)

[Lower Kootenay Band](#)

[Lyackson First Nation](#)

[Maiyoo Keyoh Society](#)

[Malahat First Nation](#)

[McLeod Lake Indian Band](#)

[Metlakatla First Nation](#)

[Musqueam Indian Band](#)

[Namgis First Nation](#)

[Neskonlith Indian Band](#)

[Nlaka'pamux Nation Tribal Council](#)

[N'Quatqua Band](#)

[Nun wa dee Stewardship Society](#)

[Okanagan Indian Band](#)

[Saulteau First Nation](#)

[Sechelt Indian Band](#)

[Shxw'owhameł First Nation](#)

[Simpco First Nation](#)

[Sliammon First Nation](#)

[Snuneymuxw First Nation](#)

[St'at'imc Government Services](#)

[Stk'emlupsemc Te Secwepemc Nation](#)

[Sts'ailes Nation](#)

[Sto:lo Nation Society](#)

[Stswecem'c Xgat'tem First Nation](#)

[Stz'uminus First Nation](#)

[Tk'emlúps te Secwépemc](#)

[Tlowitsis First Nation](#)

[Toquaht Nation](#)

[Tsilhqot'in National Government](#)

[Ts'kw'aylaxw First Nation](#)

[Tsleil-Waututh Nation](#)

[T'Sou-Ke Nation](#)

[Westbank First Nation](#)

[Uchucklesaht Tribe](#)

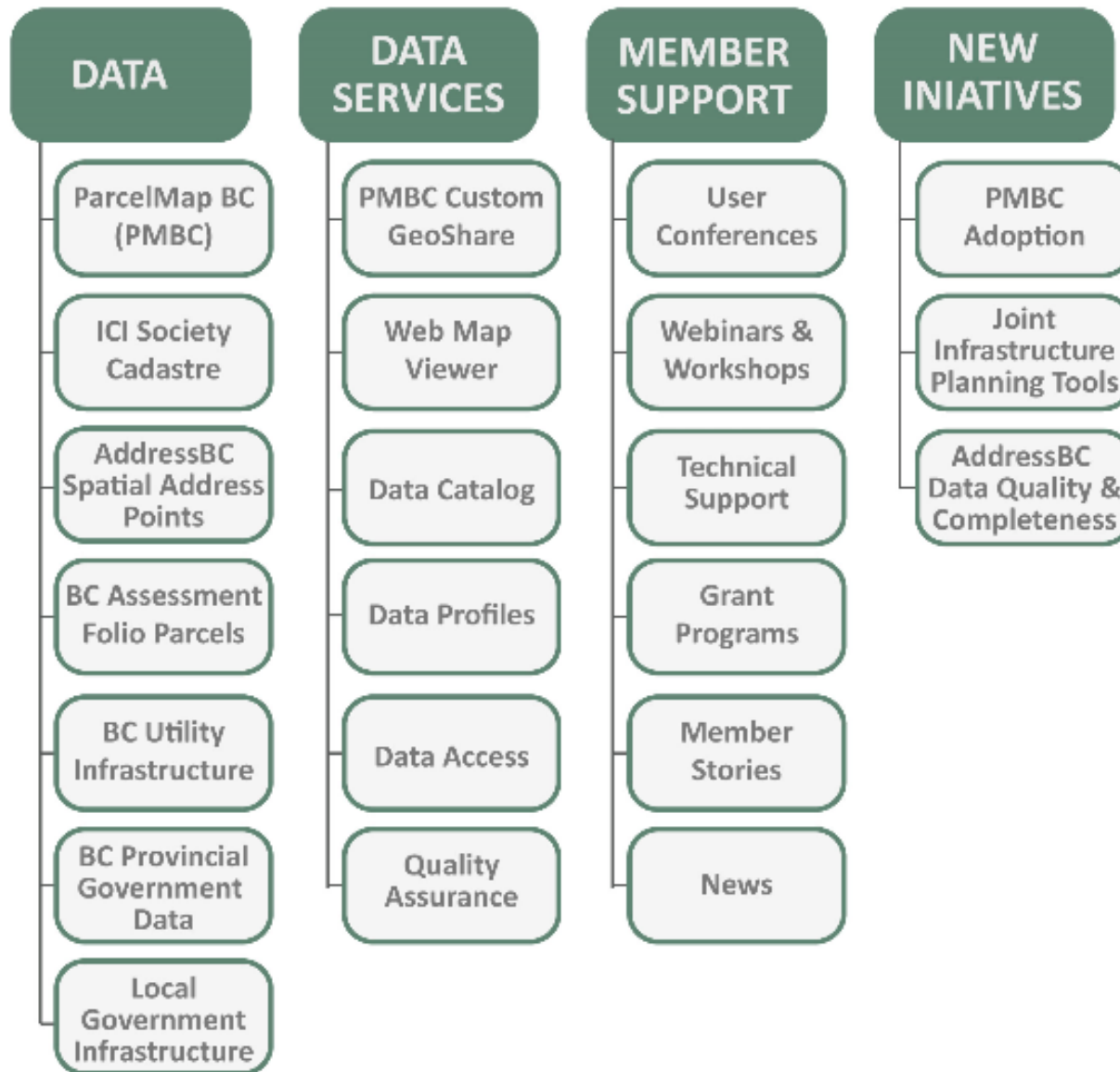
[Whispering Pines/Clinton Indian Band](#)

[Yale First Nation](#)

[Yuułuʔiłʔatḥ Government](#)



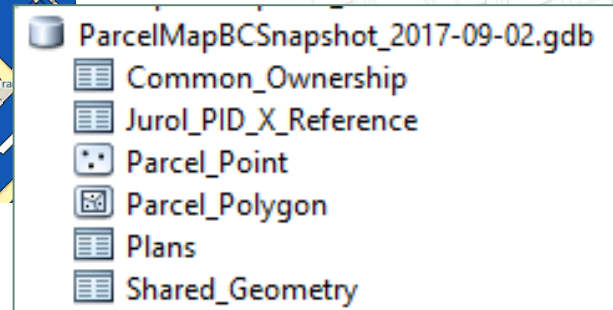
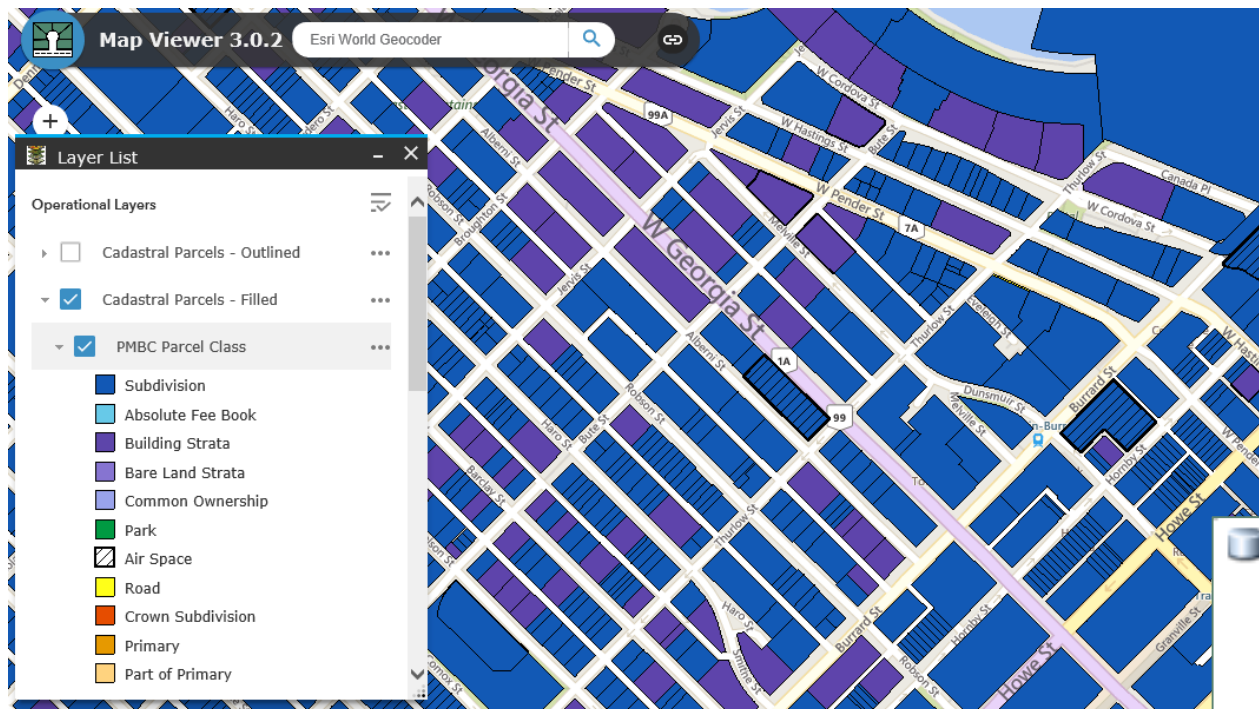
# Member Support



## Self-serve when you need it

### Map viewer 3.0.2 & Data Catalog

- Compare ParcelMap BC, ICI Society Cadastre, ICF & BC Assessment fabric along with all member datasets



# Custom GeoShare Data Order

One stop shop for geo-spatial data!





# Custom Delivered to You..

## Automate repetitive steps

### *Custom geoshare data order*

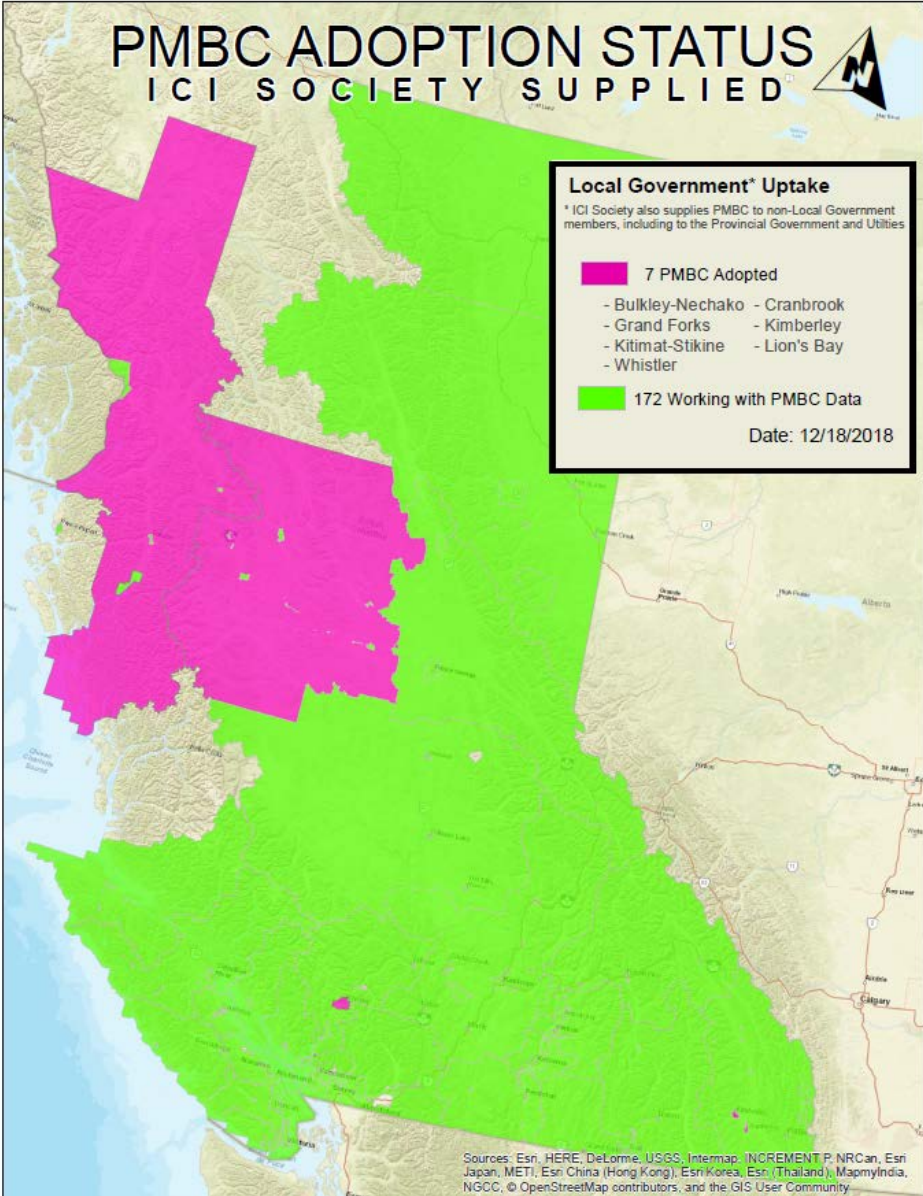
- *Automated, scheduled delivery of society data direct to your ftp folder*
- *Multiple member datasets in one package*



### ParcelMap BC Package Contents

Feature Class or Table	Object Count		
Parcel Polygon	33,984	BC Hydro - Transmission Structure	652
Parcel Point	94,747	BC Hydro - Underground Primary	8,652
Parcel Line	188,932	BC Hydro - Underground Secondary	28,422
Control Point	931	BC Hydro - Underground Transformer	3,680
Shared Geometry	50,317	BC Hydro - Underground Vault	292
Common Ownership	2,195	Fortis Gas - Dimension Arrows	24,496
Plan Attributes	6,433	Fortis Gas - Dimension Text	16,620
Jurol PID X Reference	82,298	Fortis Gas - Dimension Witness Line	9,153
Parcel Polygon Real-World Changes	25	Fortis Gas - Distribution Pipe	18,657
Plan Attributes Real-World Changes	11	Fortis Gas - Distribution Stations	16
Shared Geometry Real-World Changes	8	Fortis Gas - Distribution Valves	2,499
Common Ownership Real-World Changes	0	Fortis Gas - Transmission Pipe	553
Change Vectors	9		





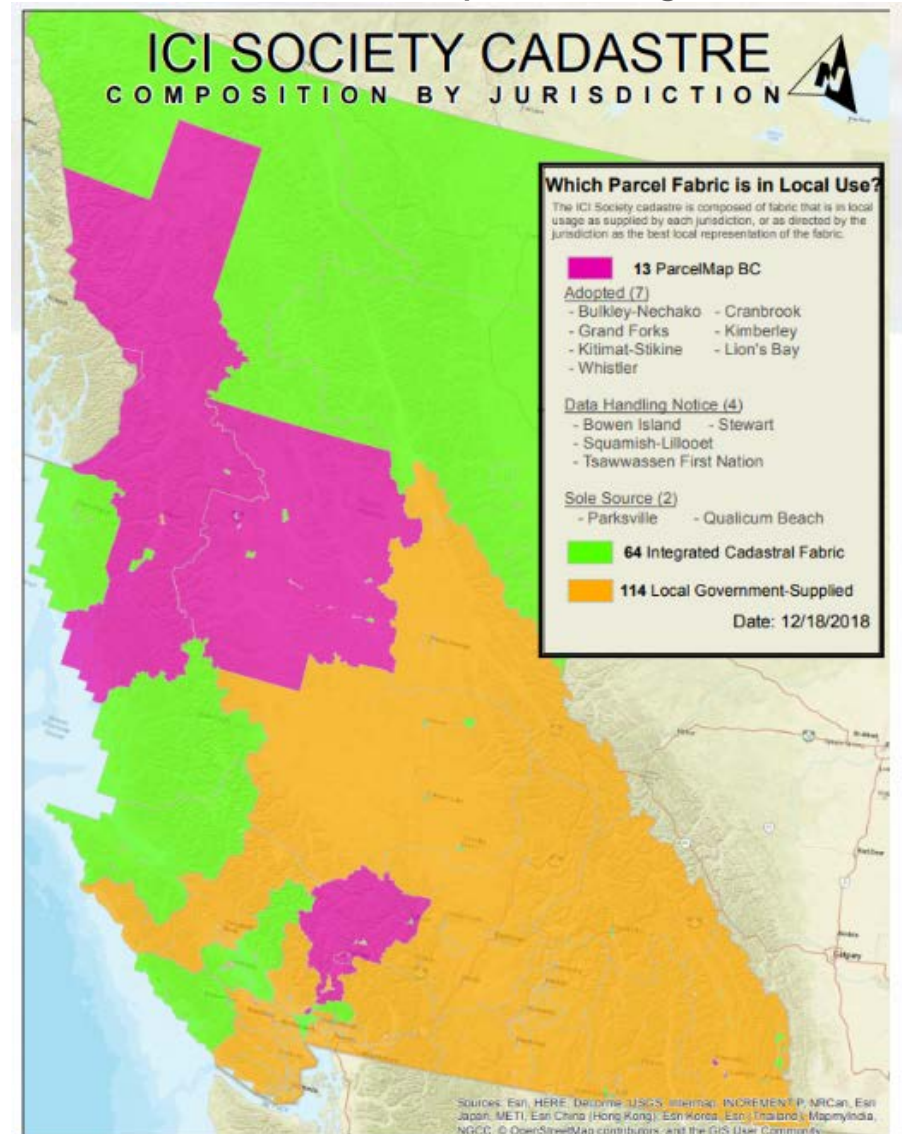
## Adoption Progress Stats

### *Communicating Progress*

This Status Map assists data consuming members understand parcel source in ICI Cadastre.

A data Handling Notice from local government contains direction to ICI Operations on what parcel representation to utilize for the ICI Cadastre.

This allows data consuming members to retain the benefit of a single source for cadastral information as local governments transition to ParcelMap BC.





## Adoption Working Group

### What:

Welcome to the first in a series of ParcelMap BC Adoption Working Group (AWG) workshops

### Why:

To facilitate addressing business hurdles and technical challenges identified as barriers to successfully adopting ParcelMap BC

### When:

These in-person sessions will be regularly scheduled with AWG Participants

### How:

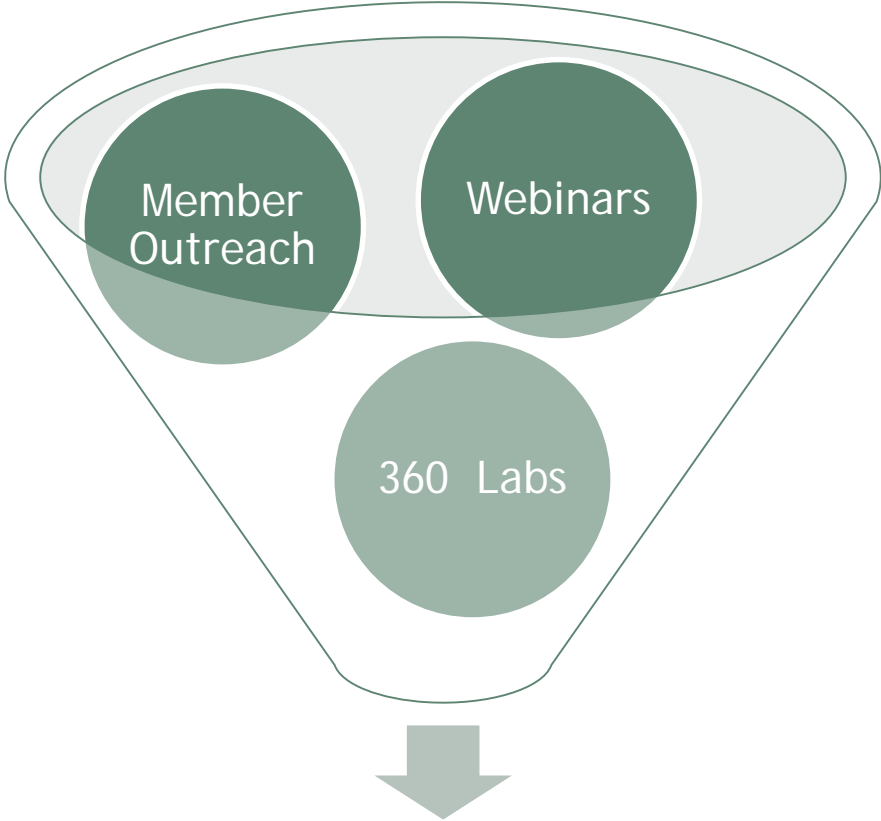
Each workshop will run concurrently in Vancouver and Victoria with agenda based on input from “homework” and/or prior workshop outcomes



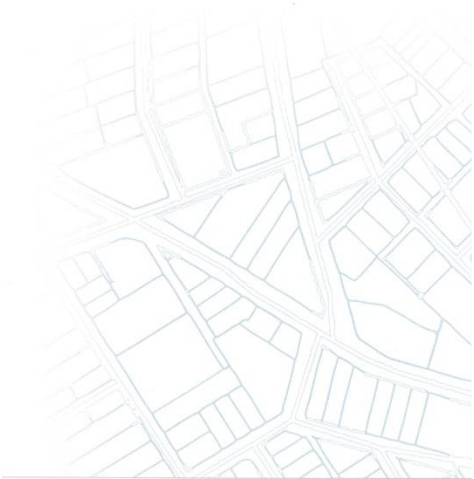
## Adoption Working Group Members

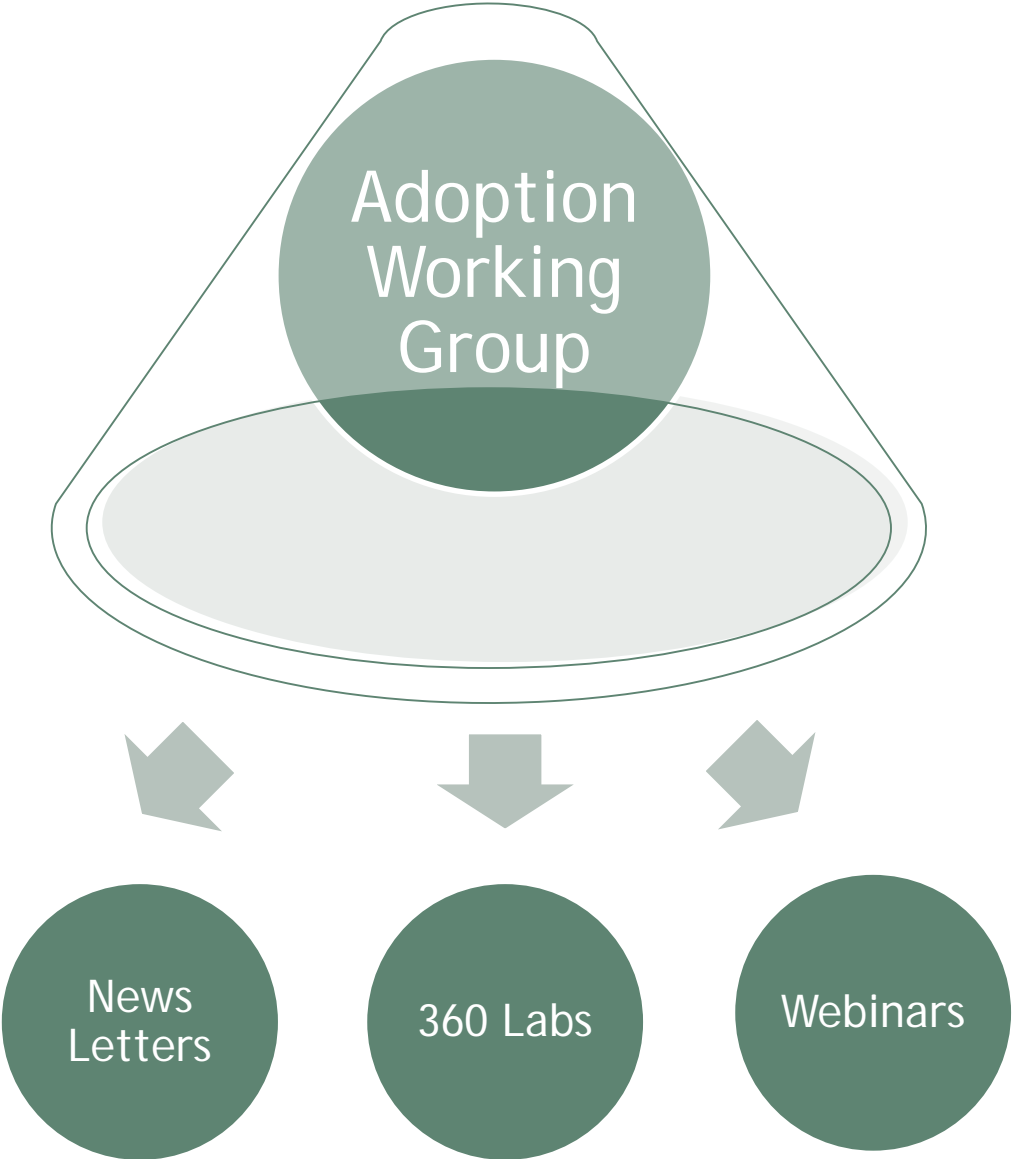
Local Government	Provincial	Utilities	Private Sector
Bowen Island	Agricultural Land Commission	BC Hydro	Esri Canada
Kootenay Boundary RD	DataBC	FortisBC	Polaris Land Surveying
Kitimat-Stiking RD	BC Assessment		WSP
Penticton	GeoBC		
Sooke	LTSA		
Surrey	MoTI		
Whistler			



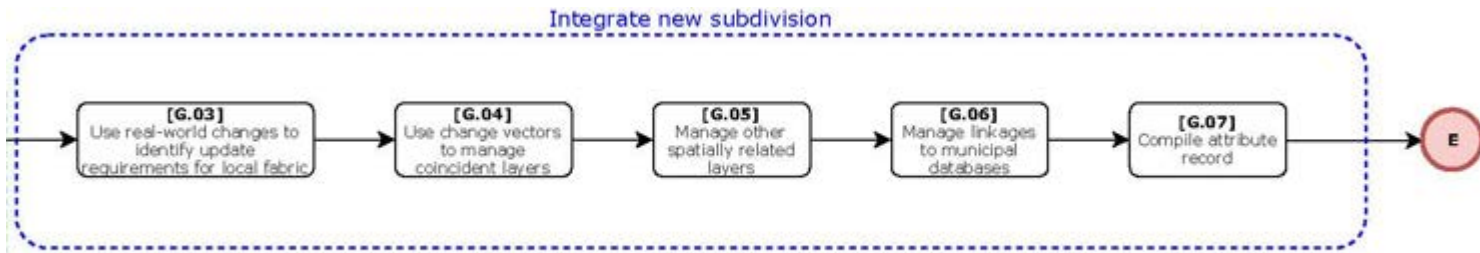
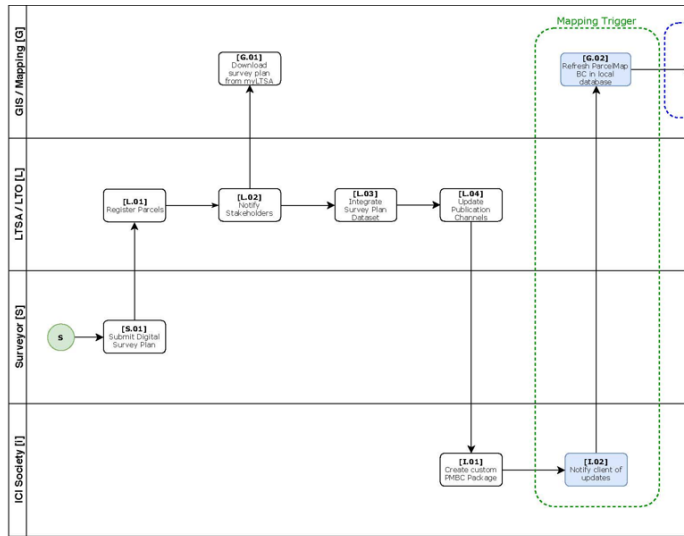


Adoption Working Group





# 360 Labs - ICI Society Workshops



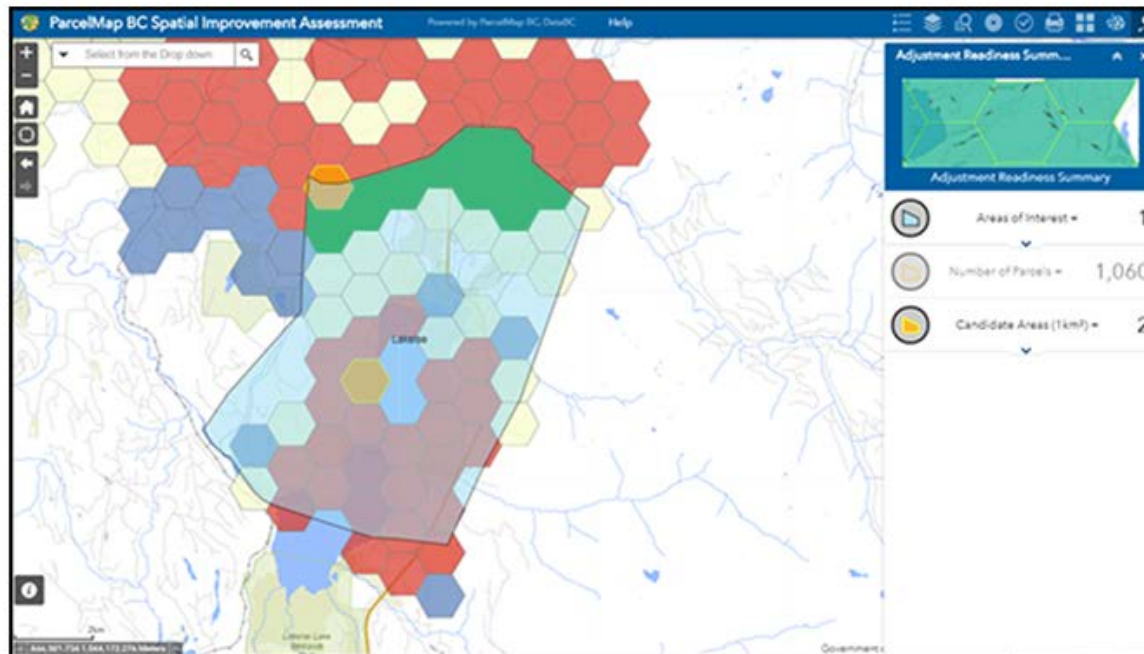
Action	Notes	Difficulty	Timeline
Set up custom PMBC package	Implement custom ID formatting requirements and establish weekly schedule for automation	Low	2018 Q4
Compare fabrics	Identify any alignment issues between ParcelMap BC and my local fabric. Compare parcel inventories using PIDs, Jurols and PINs to assess fabric completeness. Identify other semantic differences in the mapping, such as the presence or absence of various parcel types (i.e. interests, rights-of-way, foreshore and First Nations territory).	High	2019 Q2





## ParcelMap BC Spatial Improvement Assessment App Now Available

Further to discussions by the ParcelMap BC Adoption Working Group (AWG) in October 2018, the Land Title and Survey Authority of British Columbia (LTSA) is pleased to release a new resource describing Spatial Improvements in ParcelMap BC. This resource introduces a new app to visualize the assessment used by the ParcelMap BC Operations team to plan and prioritize spatial improvement work across the province, providing transparency to stakeholders on how and when improvements are applied to ParcelMap BC.



## MEMBER STORY: CITY OF KIMBERLEY



### About Kimberley & its Team

The citizens of the City of Kimberley (Kimberley) agree that, "it's a good place to be." The community of about 7,400 residents is located in southeast British Columbia, Canada along Highway 95A between the Purcell and Rocky Mountains. Known as a resort community, the picturesque area is a destination for skiing, hiking, biking, river rafting, golfing and all things outdoors.

Kimberley became a member of the Integrated Cadastral Information Society (ICI Society) in 2015. Prior to this time, like many small local governments, Kimberley relied on a paper-based system. Delivering GIS information to constituents was labour-intensive and time-consuming with, on average, a 2-3 day wait. Each request for information involved manual searches of paper-based records and lots of photo-copying.

Christopher Evan Jones came on board as the Planner in Kimberley in 2015. Working with the Manager of Planning, his role includes GIS, issuing building permits and interfacing with the community for their GIS and Planning inquiries.



### Benefits of ParcelMap BC for Kimberley

With the support of the ICI Society, Kimberley's Planning Department has chosen to fully adopt [ParcelMap BC](#) (PMBC), the Land Title and Survey Authority of British Columbia's current, complete and trusted visual representation of titled and Crown land parcels in BC as their primary cadastral layer. The adoption of ParcelMap BC has allowed Kimberley to improve the speed and efficiency of land-related research,

## Member Stories

powered by ICI Society

### Resort Municipality of Whistler



### ABOUT WHISTLER & ITS TEAM

The [Resort Municipality of Whistler](#) (RMOW) is a destination resort community, local government organization and leader in providing municipal programs, services, progressive planning and infrastructure for almost 12,000 residents and three million annual visitors. Situated in the Coast Mountains of British Columbia, Whistler was the Host Mountain Resort for the 2010 Olympic and Paralympic Winter Games. Whistler's vision: to be the premier mountain resort community as we move towards sustainability.



Photo Credit: David McColm, courtesy of Tourism Whistler

The RMOW became a member of the [ICI Society](#) (Integrated Cadastral Information Society) in 2008, but have had some component of GIS in place since the early 2000's. Vanessa Pocock is the GIS Coordinator for the RMOW. Reporting to the Information Technology Manager at Whistler, Vanessa's main role is providing support to internal departments through the creation of dynamic mapping products, the use of which allow the organization to better serve the community at large. Examples include the creation and maintenance of public-facing mapping products on the Whistler website like the [Whistler Parkings and Winter Valley Trail Maps](#).

### BENEFITS OF PARCELMAP BC ADOPTION FOR WHISTLER

With the support of the ICI Society, GIS at the RMOW recently chose to fully adopt [ParcelMap BC](#) (PMBC) as their primary cadastral layer. The RMOW have now completely discontinued their use of the Integrated Cadastral Fabric (ICF), produced by GeoBC's Parcel Fabric section on behalf of ICI Society.

ParcelMap BC improves the speed and efficiency of land-related research, planning and business decisions through a current, complete, and trusted spatial representation of the cadastre in British Columbia. ParcelMap BC integrates nearly 2.2 million titled and Crown land parcels across the province, making it one of the world's largest and most complex applications of survey-aware fabric.

Prior to the adoption of PMBC, the RMOW used a combination of automated, but primarily manual processes to bring together BC Assessment, zoning, parcel and address information. "The integration process is now almost completely automated. With PMBC as our new base, it is now much easier to create a script that brings all our property data together, allowing us to remove almost all the previously manual steps," states Vanessa Pocock.

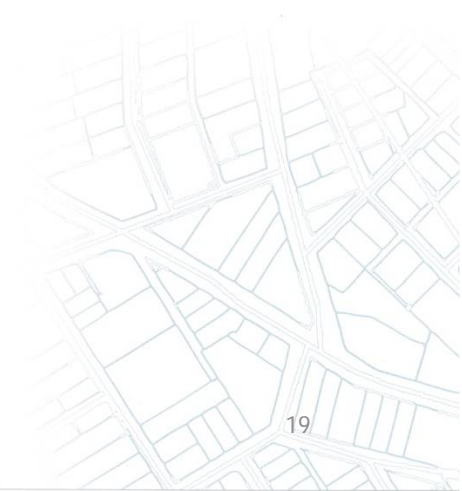
Measuring the success of PMBC adoption has been easy for Vanessa and her team. "A clear measurement for us is the ease and speed of updating data cleanly with just a few keystrokes," says Vanessa. "Our ability to provide regularly maintained, powerfully attributed, trustworthy data has improved ten-fold."

An example of how PMBC has facilitated progress can be seen through enhancements to critical business processes performed by the RMOW's FireSmart program and Emergency Operations Center (EOC). The integration with PMBC allows the members of these groups to make more informed decisions relating to critical infrastructure identified for emergency preparedness and wildfire prevention. Specifically, PMBC facilitates a more granular analysis of ownership information that becomes the



# AddressBC QA Support

Issue Management: ABC Consumer-Ready Data Working Group  
Populating AddressBC: Pre-load Quality Control  
Validating AddressBC: DataBC Geocoder Correlation Reporting  
Encouraging Custodial Review: ABC Grant Program



# Issue Management: ABC Consumer-Ready Data Working Group

## ABC Consumer Ready Data Working Group

### Objective:

To define and implement an AddressBC dataset that is of sufficient quality for consumers by identifying issues, recommending resolutions and implementing approved resolutions. Resolutions may be technical in nature, workflow related, or both and focus primarily on in-house solutions with a secondary focus on resolutions that require implementation outside of Operations.

## Constituted of address consumers and producers

Log broad issues affecting usability of the database

Bi-weekly meetings to prioritize issues and plan resolutions

Serving Members

[+ new item](#) or [edit this list](#)

✓ Last Name	First Name	Organization	Email Address
Belikov	... Gosha	Shaw	Gosha.Belikov@sjrb.ca
Goble	... Brian	Sooke	bgoble@sooke.ca
Kelsey	... Brian	DataBC	Brian.Kelsey@gov.bc.ca
Newall	... Colin	DataBC	colin.newall@gov.bc.ca
Nooij	... Piet	FortisBC	piet.nooij@fortisbc.com
Ogborne	... Carol	GeoBC	Carol.Ogborne@gov.bc.ca
Ross	... Michael	DataBC	Michael.RA.Ross@gov.bc.ca
Work	... Natalie	GeoBC	Natalie.J.Work@gov.bc.ca
Wu	... Jerry	Shaw	Jerry.Wu@sjrb.ca
Zandstra	... Tinke	Shaw	tinke.zandstra@sjrb.ca



## GeoShare integrates 150 address providers



Records that fail to meet minimum criteria  
are re-directed to the supplier for review

Omitted from the database

Reported to the supplier in GeoShare notification

Presented to the supplier in its original structure

### AddressBC content standards

Non-zero integer STREET NUMBER

Must have a STREET NAME

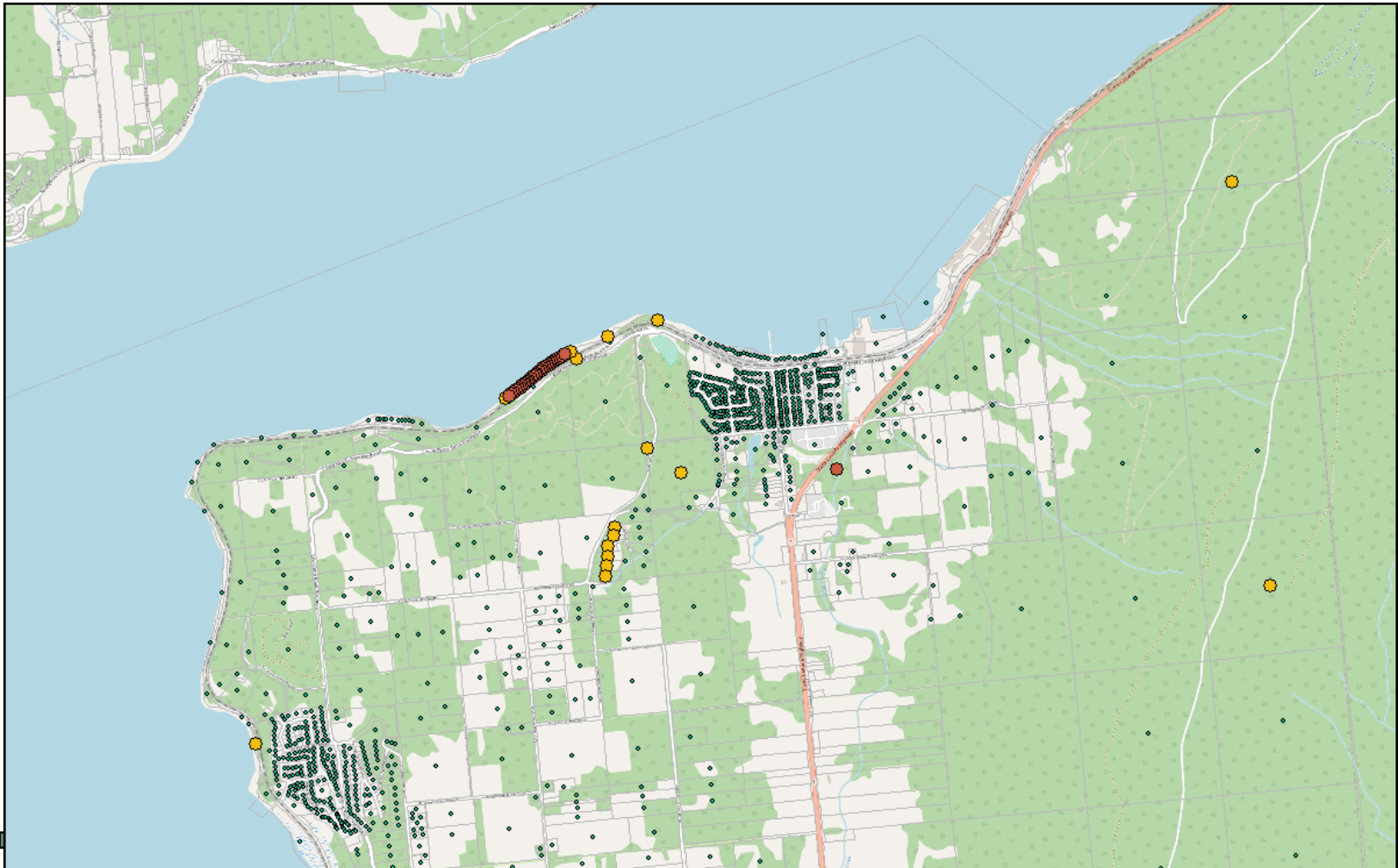
Must have a recognized STREET TYPE \*

\* exception list (i.e. some Highways)

Must be located within jurisdiction



## How well do ABC records correlate with the DataBC Geocoder?



# Encouraging Custodial Review: ABC Grant Program

INTEGRATED  
CADASTRAL  
INFORMATION  
SOCIETY

CIVICSPATIAL GRANT PROGRAM APPLICATION  
ADDRESSBC

Name of Local Government  
or First Nation:

Contact Name:

Contact Phone:

Contact e-Mail:

Project Type

Project Delivery

Amount of Grant

Submission of address data via remote GeoShare processes.

1. Receipt of AddressBC Q/A reporting (both digital reporting and the Physical Geocoder Q/A reports) on a regular basis.
2. Integration of AddressBC Q/A reporting into addressing workflows.
3. Resolution of errors and/or address anomalies in both the GeoShare Q/A report and Geocoder Q/A correlation reports.

To apply, contact us at  
info@icisociety.ca

www.icisociety.ca

One page application form  
[icisociety.ca/bc-spatial-services/member-support](http://icisociety.ca/bc-spatial-services/member-support)

\$1,000 grant available to address suppliers







# Joint Infrastructure

**Map Viewer 3.0.1** nanaimo bc

Show search results for nanaimo bc

**Layer List**

- Canfor
- BC Oil and Gas Commission
- Infrastructure Mains
- Joint Infrastructure
- Joint Infrastructure Works
  - ROAD
  - DRAINAGE
  - WATER
  - SEWER
  - OTHER
- Jurisdictional Data
- Agency Data
- Feature Labels

**Data Popup (1 of 2)**

ORGANIZATION_NAME	FORTISBC
PROJECT_ID	
PROJECT_NAME	
PROJECT_TYPE	OTHER
PROJECT_DESCRIPTION	
CONTACT_INFORMATION	Ted Norcott
PROJECT_URL	
PROJECT_YEAR	
START_DATE	
PROBABILITY	
CREATED_BY	ICISOCIETY
CREATE_DATE	12/5/2016, 1:46 PM
EDITED_BY	ICISOCIETY
EDIT_DATE	12/5/2016, 1:46 PM
<a href="#">Zoom to</a>	





# Questions?

Steve Mark - Technical Coordinator  
smark@icisociety.ca

